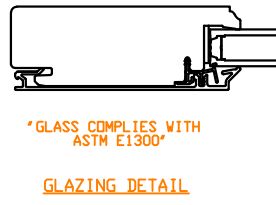
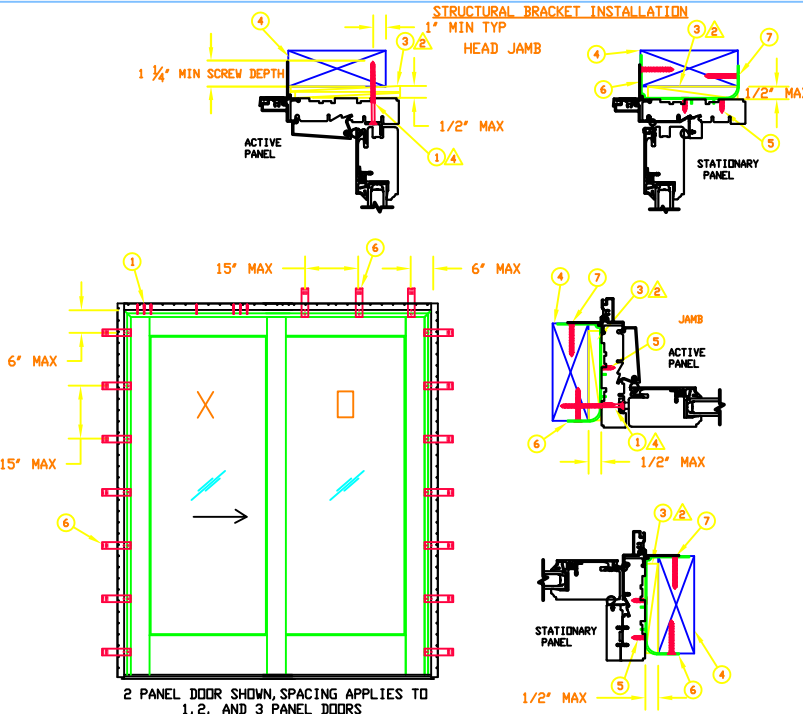


UNIT	MAX PANEL WIDTH	MAX FRAME SIZE	PG
USFDG2 OX/XO	49 1/2	96 3/8 X 98	+50/-50
USFDG2 OOX/XOO	49 1/2	146 1/4 X 98	+40/-40
USFD2.25G2 OX/XO	61 1/2	120 3/8 X 122	+40/-40
USFD2.25G2 OOX/XOO	61 1/2	182 1/4 X 122	+40/-40
USD2.25 OX/XO	60 3/8	120 3/8 X 98	+40/-40
USD2.25 OOX/XOO	60 3/8	181 3/8 X 98	+40/-40
USD2.25 OOX/XOO	36 3/8	109 3/8 X 122	+30/-30
USD OX/XO	48 3/8	96 3/8 X 98	+30/-30
USD OX/XO	48 3/8	96 3/8 X 82	+40/-40
USD OOX/XOO	48 3/8	145 3/8 X 98	+30/-30
USD OOX/XOO	48 3/8	145 3/8 X 82	+40/-40



**JAMB SCREW INSTALLATION METHOD:**

- UNIT MUST NOT BE IN DIRECT CONTACT WITH EITHER CONCRETE OR TREATED BUCK MATERIAL. IF SHIM SPACE IS LESS THAN 1/8" WRAPPING THE JAMBS AND HEAD JAMBS WITH WINDOW FLASHING TAPE IS REQUIRED AS A BARRIER BETWEEN THE UNIT AND CONCRETE OR TREATED LUMBER.
- SECURE THE JAMBS WITH #10 X 3" SCREWS SPACING 6" FROM CORNER AND 15" DC
- MINIMUM OF 2 PER SIDE.
- SHIM AT EACH SCREW AND BRACKET LOCATION
- APPLY TWO #8 X 3" SCREWS INTO EACH KEEPER
- APPLY TWO #8 X 3" SCREWS INTO EACH FRAME ALIGNMENT BOLT
- APPLY SEVEN #8 X 3" SCREWS INTO EACH HEADER TRACK
- APPLY #8 X 1 1/2" SCREWS THROUGH SILL SPACED 15" DC
- NAILING FIN SHOWN BUT IS OPTIONAL
- STRUCTURAL BRACKETS INSTALLED ABOVE STATIONARY PANELS 6" FROM CORNERS AND 15" DC

**NOTES:**

- THIS PRINT IS FOR STRUCTURAL PERFORMANCE ONLY. FOR FLASHING & SEALING REQUIREMENTS, REFER TO THE INSTALLATION INSTRUCTIONS.
- SHIMS:
  - A SHIM MUST BE PLACED 4-6" FROM EACH CORNER.
  - ALL OTHERS MUST BE PLACED A MAX OF 15 INCHES APART.
- IF CHEMICALLY TREATED LUMBER IS USED FOR BUCK MATERIAL, FASTENERS INTO THE BUCK MUST BE A MINIMUM OF 0.90 OZ/FT<sup>2</sup> ZINC HOT DIPPED GALVANIZED OR STAINLESS STEEL TYPE 304 OR 316.

USED THROUGH FRAME HARDWARE

5 APPLIES TO 4-9/16 AND 6-9/16 FRAMES, 4-9/16 SHOWN

**CATEGORY:**  
SLIDING DOOR, SLIDING FRENCH DOOR,  
**UNIT TYPE:**  
USD, USD2.25, USFDG2, USFD2.25G2,

ITEM NO	REF NO	DESCRIPTION	UNSPECIFIED TOLERANCES
8	-----	#10 X 3" WOOD SCREW	DECIMALS: XXX ± .03
7	-----	#8 X 1 1/2" SCREW	ANGLE DEG: ± .5
6	-----	STRUCTURAL BRACKET	LINEAL: ± .125
5	-----	#8 X 5/8" SCREW	FAB LINEAL: ± NA
4	-----	2X WOOD BUCK BY OTHERS	
3	-----	SHIM	
2	-----	#10 X 2 1/2" WOOD SCREW	MATERIAL: NA
1	-----	#8 X 3" WOOD SCREW	

**STRUCTURAL BRACKET INSTALLATION METHOD:**

- UNIT MUST NOT BE IN DIRECT CONTACT WITH EITHER CONCRETE OR TREATED BUCK MATERIAL. IF SHIM SPACE IS LESS THAN 1/8" WRAPPING THE JAMBS AND HEAD JAMB WITH WINDOW FLASHING TAPE IS REQUIRED AS A BARRIER BETWEEN THE UNIT AND CONCRETE OR TREATED LUMBER.
- MINIMUM OF 2 BRACKETS PER SIDE.
- SCREWS LISTED BELOW MUST BE FULLY EMBEDDED.
- ATTACH TO THE UNIT WITH TWO #8 X 3/8" SCREWS.
- ATTACH TO THE BUCK WITH TWO #8 X 1 1/2" SCREWS ON EACH SIDE OF THE BUCK.
- APPLY TWO #8 X 3" SCREWS INTO EACH KEEPER
- APPLY TWO #8 X 3" SCREWS INTO EACH FRAME ALIGNMENT BOLT
- APPLY SEVEN #8 X 3" SCREWS INTO EACH HEADER TRACK
- APPLY #8 X 1 1/2" SCREWS THROUGH SILL SPACED 15" DC
- NAILING FIN SHOWN BUT IS OPTIONAL

**MARVIN** RESEARCH & DEVELOPMENT

COLLECTION: ULTIMATE

DWG TYPE: INSTALLATION  
DESCRIPTION: OX/XO AND OOX/XOO INSTALLATION

CHK:	SIZE: B	CLASS: MISC	DWG NO: 00135421
APP:	SCALE: NA	DATE: 9/30/2022	DWG BY: BALDWIN, JACOB SHEET: 1 OF 1

**NOTICE - CONFIDENTIAL INFORMATION**

The information in this document is privileged and strictly confidential. The information contained herein shall be used only by Marvin Windows and Doors employees and by those agents or suppliers granted official written permission. If the reader of this document is not the intended recipient, or the employee or agent of the intended recipient, please delete this document from all data storage devices, and destroy all hard copies. Any unauthorized dissemination, distribution, copying or other use of the information contained in this document is strictly prohibited.